

Three-Phase Solid State Relay

HSR-3D/3A

INSTRUCTION MANUAL

We appreciate you for purchasing HanYoung NUX Co.,Ltd product. Before using the product you have purchased, check to make sure that it is exactly what you ordered. Then, please use it following the instructions below.

MAIN PRODUCTS

- DIGITAL : Temperature Controller, Counter, Timer, Speedmeter, Tachometer, Panel Meter, Recorder
- SENSOR : Proximity Switch/Photo Electric Sensor, Rotary Encoder, Optical Fiber Sensor, Pressure Sensor
- ANALOG : Timer, Temperature Controller

HEAD OFFICE

1381-3, Juan-Dong, Nam-Gu Incheon, Korea
TEL: (82-32)876-4697 FAX: (82-32)876-4696

HANYOUNG NUX

■ Safety information

Before you use, read safety precautions carefully, and use this product properly. The precautions described in this manual contains important contents related with safety; therefore, please follow the instructions accordingly. The precautions are composed of DANGER, WARNING and CAUTION.



DANGER

Do not touch or contact the input/output terminals because they may cause electric shock.



WARNING

1. Before you use, read safety precautions carefully, and use this product properly.
2. Do not touch or contact the input/output terminals because they may cause electric shock.
3. The user must install the external safety equipment when there are possible defect of this product or serious accidents.
4. To prevent deflection or malfunction of this product, supply proper power voltage in accordance with the rating.
5. To prevent electric shock or devise malfunction of this product, do not supply the power until the wiring is completed.
6. Reassemble this product while the power is off. Otherwise, it may cause malfunction or electric shock.
7. If the user use the product with methods other than specified by the manufacturer, there may be bodily injuries or property damages.
8. Due to the danger of electric shock, use this product installed onto a panel while an electric current is applied.



CAUTION

1. Before using the product you have purchased, check to make sure that it is exactly what you ordered.
2. Do not use this product at any place with corrosive (especially noxious gas or ammonia) or flammable gas.
3. Do not use this product at any place with liquid, oil, medical substances, dust, salt or iron contents.
4. Do not use this product at any place with excessive induction trouble, static electricity or magnetic noise.
5. Do not use this product at any place with possible thermal accumulation due to direct sunlight or heat radiation.
6. When the product gets wet, the inspection is essential because there is danger of an electric leakage or fire.
7. Do not connect anything to the unused terminals.
8. For DC types, connect wires at the correct position after checking polarity of terminal.
9. The rated heat sink must be used; otherwise, the product may be destroyed.
10. When product is disposed, treat as a industrial waste.

■ Ordering Information

MODEL	Suffix code	Description
HSR	3 A 50 2 Z	
Control Phase	2	Single Phase
	3	Three Phase
Input control voltage	D	4 ~ 32 V d.c
	A	90 ~ 264 V a.c
Rated load current	50	50 A
	70	70 A
Rated load voltage	2	90 ~ 264 V a.c
	4	90 ~ 480 V a.c
Operation method (Switching Mode)	Z	Zero Cross Switching
	R	Random Switching
Heat Sink Heat Sink	-	Without Heat Sink
	-T	With Heat Sink

■ Rated Specifications

■ Direct Current(DC) Input Type

Model	HSR-3D502Z	HSR-3D702Z	HSR-3D504Z	HSR-3D704Z	
	HSR-3D502R	HSR-3D702R	HSR-3D504R	HSR-3D704R	
INPUT	Rated Voltage	5 - 24 V d.c			
	Operating Voltage Range	4 - 2 V d.c			
	Impedance	Max. 4 kΩ			
	Operation Voltage	Min. 3 V d.c			
	Reset Voltage	Max. 1.5 V d.c			
OUTPUT	Input Current	Constant Current method : 14 mA (±3)			
	Rated Load Voltage	100-240 V a.c		100-440 V a.c	
	Operating Voltage Range	90-264 V a.c		90-480 V a.c	
	Peak Voltage (non-repetition)	800 V		1200 V	
	Rated Load Current	50 A	70 A	50 A	70 A
	Frequency	25 - 65 Hz			
	Surge Current	580 A			
	Leakage Current	Max. 20 mA			
	One State Voltage drop	1.8 V (Max. R.M.S)			
	Min. Operation Current	0.5 A			
Zero Cross Function	O	X	O	X	
Response Time	1/2Cycle+ 1 ms Max.	Max. 1 ms	1/2Cycle+ 1 ms Max.	Max. 1 ms	
Insulating Resistance	500 V d.c, 100 kΩ (Input/Output and between Case)				
Dielectric Strength	2500 V a.c (For one min. in 60 Hz)				
Vibration	10-55Hz, Double amplitude: 1.5mm, Each X,Y,X axis for 2 hours				
Shock	1000 m/s ² (about 100 G), Each X · Y · Z axis for 3 times				
Storage Temperature	-30 - 90 °C				
Ambient Temperature	-20 - 80 °C				
Ambient Humidity	45 - 85 % R.H.				
Weight	About 380 g				

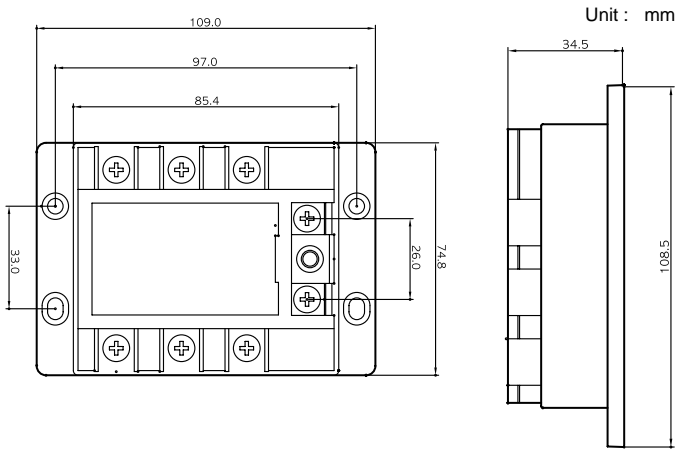
Notes : The weight does not include package box.

■ Alternating Current(AC) Input Type

Model	HSR-3A502Z	HSR-3A702Z	HSR-3A504Z	HSR-3A704Z	
	HSR-3A502R	HSR-3A702R	HSR-3A504R	HSR-3A704R	
INPUT	Rated Voltage	100 - 240 V a.c			
	Operating Voltage Range	90 - 264 V a.c			
	Impedance	Max. 40 kΩ			
	Operation Voltage	Min. 75 V a.c			
	Reset Voltage	Max. 40 V a.c			
OUTPUT	Input Current	240 V a.c / 9 mA (±4)			
	Rated Load Voltage	100 - 240 V a.c		100 - 440 V a.c	
	Operating Voltage Range	90 - 264 V a.c		90 - 480 V a.c	
	Peak Voltage (non-repetition)	800 V		1200 V	
	Rated Load Current	50 A	70 A	50 A	70 A
	Frequency	25 - 65 Hz			
	Surge Current	580 A			
	Leakage Current	Max. 20 mA			
	One State Voltage drop	1.8 V (Max. R.M.S)			
	Minimum Operation Current	0.5 A			
Zero Cross Function	O	X	O	X	
Response Time	1/2Cycle+ 1 ms Max.	Max. 1 ms	1/2Cycle+ 1 ms Max.	Max. 1 ms	
Insulating Resistance	500 V d.c, 100 kΩ (Input/Output and between Case)				
Dielectric strength	2500 V a.c (For one min. in 60 Hz)				
Vibration	10-55Hz, Double amplitude: 1.5mm, Each X,Y,X axis for 2 hours				
Shock	1000 m/s ² (about 100 G), Each X · Y · Z axis for 3 times				
Storage Temperature	-30 - 90 °C				
Ambient Temperature	-20 - 80 °C				
Ambient Humidity	45 - 85 % R.H.				
Weight	About 380 g				

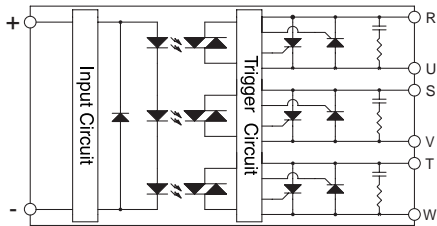
Notes : The weight does not include package box.

External Dimension

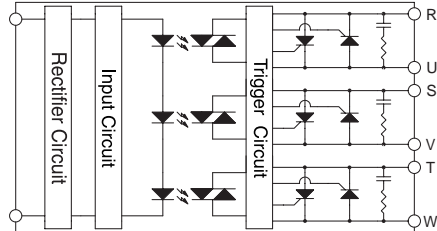


Circuit

DC Input Type



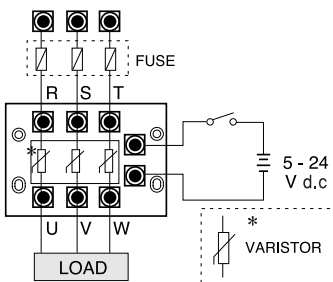
AC Input Type



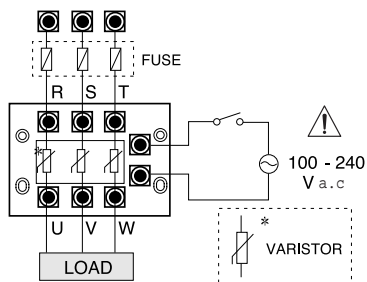
Input Terminals : R, S, T
Output Terminals : U, V, W

Application Circuit

DC Input Type

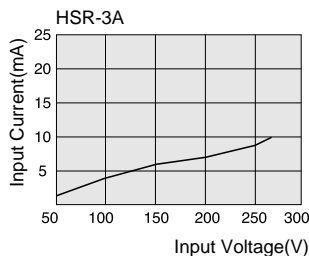
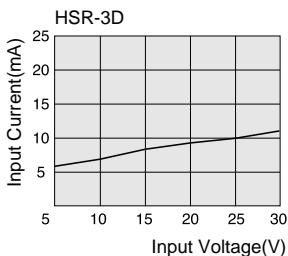


AC Input Type

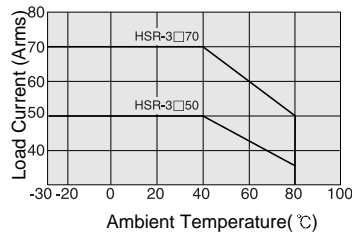


Load Current Characteristics

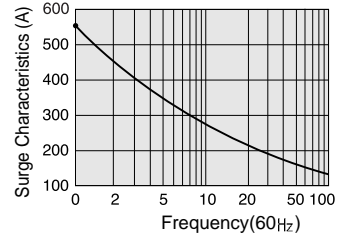
Input Voltage / Current Characteristics



Load Current Characteristics

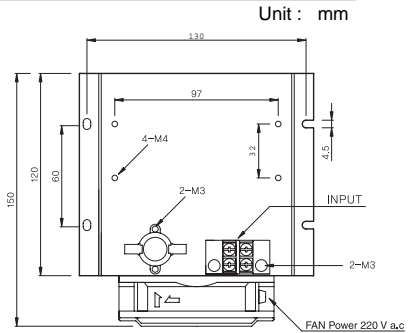
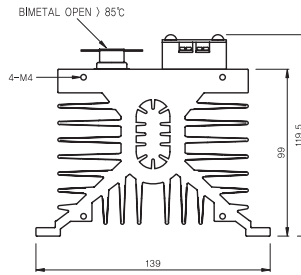


Surge Current Characteristics

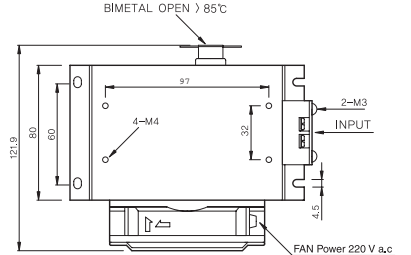
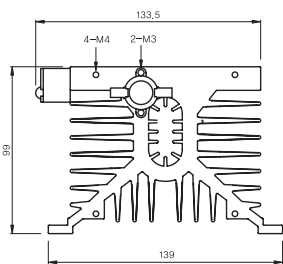


Heat Sink

HSN 80-F



HSN 120-F



Model	Applicable Model	Capacity(A)	Fan(L)
HSN 80-F	HSR-3□50□□	50(A)	92 X 92 X 25T
HSN 120-F	HSR-3□70□□	70(A)	92 X 92 X 25T

※ FAN: Please adhere it as like above picture (The arrow on the fan need to be facing to the heat sink)

※ The above contents can be changed without prior notice for improvement of performance.

Precautions during the use of Heat Sink

- Using standard heat sink is mandatory for this product.
- Even the standard heat sink is used, SSR damage may occur if the environment temperature rises or if the ventilation does not work well. (Environment temperature : over 40 °C)
- The normal SSR element is damaged at the maximum temperature of 125 °C. When the temperature of heat sink is 80 °C, the temperature of the element reaches around 125 °C. Therefore, during operation, measure the temperature of heat sink.
- When you connect SSR onto the heat sink, heat-transmitting grease is needed for smooth heat transmission.
- To prevent separation by vibration, tighten up with bolts.
- Do not use any insulating materials such as wood, plastic or rubber. The standard heat sink must be greased on the bottom side as shown below and connected.
- ※ The heatproof silicon grease must be applied thoroughly on the heat sink as well as the bottom of SSR. The case side of heat sink needs to be installed on up and down directions

